



# CAT<sup>®</sup> SOLUTIONS

## FOR LANDSCAPING



**BUILT FOR IT.™**

Wheeler





## SKID STEER LOADERS

A small machine with the power, comfort and versatility to get any job done.

MODEL	FLYWHEEL POWER (HP/KW)	OPERATING CAPACITY (LB/KG)	OPERATING WEIGHT (LB/KG)
226B SERIES 3	56 / 42	1,500 / 680	5,822 / 2,641
236D	73.2 / 54.6	1,800 / 818	6,559 / 2,975
242D	73.2 / 54.6	2,150 / 975	6,980 / 3,166
246D	72.9 / 54.4	2,150 / 975	7,424 / 3,368
262D	72.9 / 54.4	2,700 / 1,225	8,011 / 3,634
272D	95 / 71	3,200 / 1,451	8,252 / 3,743
272D XHP	106 / 79	3,700 / 1,678	9,137 / 4,144



## MULTI TERRAIN LOADERS

Skid steer power and versatility with traction and light footprint of rubber tracks.

MODEL	FLYWHEEL POWER (HP/KW)	OPERATING CAPACITY (LB/KG)	OPERATING WEIGHT (LB/KG)
247B3	56.0 / 42.0	2,150 / 975	6,997 / 3,174
257D	73.2 / 54.6	2,800 / 1,270	8,048 / 3,651
277D	72.9 / 54.4	3,290 / 1,492	9,293 / 4,215
287D	72.9 / 54.4	4,000 / 1,814	9,929 / 4,504



## COMPACT TRACK LOADERS

Suspended steel undercarriage for smooth ride and productivity in a variety of conditions.

MODEL	FLYWHEEL POWER (HP/KW)	OPERATING CAPACITY (LB/KG)	OPERATING WEIGHT (LB/KG)
259D	73.2 / 54.6	2,900 / 1,315	8,945 / 4,057
279D	72.9 / 54.4	2,935 / 1,331	9,893 / 4,487
289D	72.9 / 54.4	3,800 / 1,724	10,533 / 4,778
299D	95 / 71	4,250 / 1,928	10,718 / 4,862
299D XHP	106 / 79	4,650 / 2,109	11,612 / 5,267



## MINI HYDRAULIC EXCAVATORS

Work in tight spaces with the power to dig into any construction project.

MODEL	NET POWER (HP/KW)	OPERATING WEIGHT (LB/KG)
300.9D	13 / 9.6	2,060 / 935
301.4C	17.7 / 13.2	3,042 / 1,380
301.7D	17.7 / 13.2	3,810 / 1,728
301.7D CR	17.7 / 13.2	3,726 / 1,690
302.2D	17.9 / 13.2	4,464 / 2,025
302.4D	17.7 / 13.2	5,115 / 2,320
302.7D CR	20.7 / 15.2	5,886 / 2,670
303.5E CR	31.6 / 23.6	7,734 / 3,508
304E CR	40 / 30	8,497 / 3,854
305E CR	40.2 / 30	10,836 / 4,915
305.5E CR	44.2 / 32.9	11,618 / 5,270
308E2 CR SB	65 / 48.5	18,519 / 8,400



## COMPACT WHEEL LOADERS

Big loader features in a compact size. Compatible with many Skid Steer Loader attachments for added versatility.

MODEL	POWER (HP/KW)	PIN HEIGHT @ MAX LIFT (FT/MM)	OPERATING WEIGHT (LB/KG)	OPERATING CAPACITY (YD³/M³)
906H2	69 / 52	10.6 / 3,230	12,412 / 5,630	1.18 / .9
907H2	69 / 52	10.6 / 3,230	12,809 / 5,810	1.3 / 1
908H2	69 / 52	11.2 / 3,410	14,253 / 6,465	1.4 / 1.1
914G2	95 / 71	11.3 / 3,435	17,530 / 7,950	1.7 / 1.3
IT14G2	95 / 71	12.6 / 3,798	18,632 / 8,450	1.7 / 1.3



## BACKHOE LOADERS

Best-in-class performance from the most versatile machines on the construction site.

MODEL	NET POWER (HP/KW)	OPERATING WEIGHT (NOMINAL LB/KG)	DIG DEPTH (FT-IN/MM)
416F	87 / 65	14,881 / 6,750	14'3" / 4,360
420F / 420F IT	93 / 69	15,201 / 6,895	14'3" / 4,360
430F / 430F IT	107 / 80	15,708 / 7,125	15'4" / 4,698
450F	127 / 95	24,141 / 10,950	17'2" / 5,260



## TELEHANDLERS

The power to lift and extend heavy loads and place them in elevated areas of the jobsite.

MODEL	LIFT HEIGHT	RATED LOAD CAPACITY (LB/KG)	OPERATING WT (LB/KG)
TH255C	18'4" / 5.6 m	5,500 / 2,500	11,000 / 4,999
TH406C	20'0" / 6.1 m	8,150 / 3,700	18,364 / 8,330
TH407C	24'0" / 7.3 m	8,150 / 3,700	19,246 / 8,730
TH514C	45'0" / 13.7 m	11,021 / 4,990	24,890 / 11,290
TL642C	42'0" / 12.8 m	6,500 / 2,948	21,245 / 9,637
TL642C w/ stabilizers	42'0" / 12.8 m	6,500 / 2,948	21,845 / 9,909
TL943C	43'0" / 13.1 m	9,000 / 4,082	26,525 / 12,032
TL943C w/ stabilizers	43'0" / 13.1 m	9,000 / 4,082	27,125 / 12,304
TL1055C	55'1" / 16.8 m	10,000 / 4,536	34,160 / 15,495
TL1255C	54'3" / 16.6 m	12,000 / 5,443	35,860 / 16,267



## DOZERS

The industry standard for land clearing and dozing work.

MODEL	POWER (HP/KW)	OPERATING WEIGHT-XL (LB/KG)	BLADE
D3K2	80 / 59.7	17,544 / 7,958	VPAT
D4K2	92 / 68.8	18,080 / 8,201	VPAT
D5K2	104 / 77.6	20,534 / 9,314	VPAT



## SMALL EXCAVATORS

Unmatched productivity for trenching, digging foundations or site prep.

MODEL	NET POWER (HP/KW)	MAX OPERATING WEIGHT (LB/KG)
312E	91 / 68	33,080 / 15,000
314E CR	89 / 67	32,600 / 14,800
316E	113 / 85	38,801 / 17,600

To see additional excavator sizes, visit [cat.com](http://cat.com)



## WHEEL LOADERS

Superior reach, excellent visibility and low effort controls to lift, load, move and dump.

MODEL	ENGINE HP (HP/KW)	PIN HEIGHT @ MAX LIFT (FT)	OPERATING WEIGHT (LB/KG)	OPERATING CAPACITY (YD³)
924K	141 / 105	12.8	28,360 / 12,868	2.5 – 6.5
930K	154 / 115	12.8	30,479 / 13,829	2.7 – 6.5
938K	169 / 126	13.0	35,104 / 15,928	3.2 – 6.5

# WHEN UPTIME MATTERS, COUNT ON CAT FOR THE BEST IN DEALER SUPPORT



When you've got employees on the job and eager clients, you need equipment you can rely on. Whether you work on your own machines or want it done for you, Wheeler keeps you up and running.

- Rapid parts availability
- Online parts ordering
- Preventive maintenance services
- Maintenance agreements
- Field service trucks
- Visit [wheelercat.com/locations](http://wheelercat.com/locations) to find our branch store nearest you

## TOUGH TOOLS FOR TOUGH MACHINES

### CLEARING

Ripping • Grubbing  
Breaking • Cutting  
Grabbing • Loading

### EARTHMOVING

Trenching • Excavating  
Drilling • Backfilling  
Grading • Raking

### FINISHING

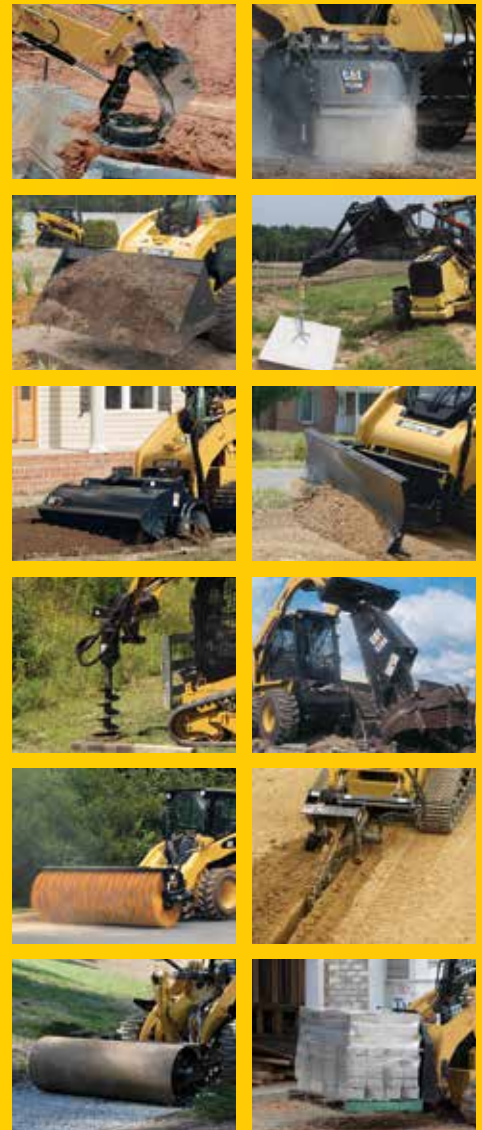
Unloading • Placing  
Spreading • Compacting  
Rolling • Sweeping

### Work Tool Attachments

Cat Work Tool attachments tailor Cat machines to the specific requirements of your working needs. Caterpillar Work Tool attachments enhance the productivity and utility of Caterpillar machines, equipping them for a wide range of tasks and operating requirements, and providing total system solutions for any job application.

### CAT WORK TOOLS

- Augers
- Backhoes
- Blades
  - Angle
  - Dozer
- Brooms
- Brushcutters
- Couplers
- Cold Planers
- Forks
  - Pallet
  - Utility
  - Industrial Grapple
  - Utility Grapple
- Hammers
- Buckets
  - General Purpose
  - Multi Purpose
  - Light Material
  - Utility
  - Dirt
  - Ditch Cleaning
  - High Capacity
  - Heavy Duty
  - Side Dump
  - Industrial Grapple
  - Utility Grapple
  - Coral
  - Heavy Duty Rock
  - Soil Excavation
- Landscape Tillers
- Material Handling Arms
- Mulchers
- Rakes
  - Industrial Grapple
  - Landscape
  - Power Box
- Shears
- Snowblowers
- Snow Plow
- Sectional Snow Push
- Stump Grinders
- Thumbs
- Trenchers
- Vibratory Compactors
- Wheel Saws



Visit [wheelercat.com/new/attachments](http://wheelercat.com/new/attachments) to see specifications, photos and videos. For availability and inquiries contact Trevor Shuman, Govt. ISR and Work Tool Specialist, [tshuman@wheelercat.com](mailto:tshuman@wheelercat.com), 801.974.0511



## USED EQUIPMENT

### Cat® Used and Certified Used Equipment

From a large supply ranging in age and hour – to Cat® Certified Used Equipment, financing and extended service coverage options – Cat dealers offer affordable alternatives to new machines and engines. Used inventory includes trucks, dozers, excavators, graders, loaders, forklifts, engines, generator sets, work tools and more.

Visit [wheelercat.com/used](http://wheelercat.com/used)



## RENTAL



### From Heavy Duty to Light Duty, Get It All Here!

Count on The Cat® Rental Store for all your equipment rental needs. From attachments to construction equipment, Cat® Rental Stores offer products from Cat and other leading brands to meet most jobsite needs.

Visit [www.catrentalstore.com](http://www.catrentalstore.com) to browse the lineup of available equipment at your local Cat® Rental Store and to request a quote.



## Commercial Account

AUTHORIZED CARDHOLDER  
PROJECT NAME / COMPANY  
1234 5678 9012 3456



## FINANCING

Cat Financial Commercial Account is a fast and convenient way to pay for parts and service purchases and machine rentals across the U.S. With your Commercial Account, you can purchase or rent anything offered at Wheeler Machinery Co.

Visit [wheelercat.com/finance](http://wheelercat.com/finance)

[wheelercat.com/residential-construction](http://wheelercat.com/residential-construction)

800.662.8650

# BUILT FOR IT.™

