



CAT SOLUTIONS

FOR AGRICULTURE



BUILT FOR IT.™





SKID STEER LOADERS

A small machine with the power, comfort and versatility to get any job done.

MODEL	NET FLYWHEEL POWER (HP/KW)	RATED OPERATING CAPACITY (LB/KG)	OPERATING WEIGHT (LB/KG)
226D	66 / 49	1,550 / 703	5,705 / 2,588
232D	66 / 49	1,850 / 839	6,213 / 2,818
236D	73 / 55	1,800 / 818	6,559 / 2,975
242D	73 / 55	2,150 / 975	6,980 / 3,166
246D	73 / 55	2,150 / 975	7,424 / 3,368
262D	73 / 55	2,700 / 1,225	8,011 / 3,634
272D2	95 / 71	3,400 / 1,542	8,768 / 3,977
272D2 XHP	106 / 79	3,650 / 1,656	9,255 / 4,198



MULTI TERRAIN LOADERS

Skid steer power and versatility with traction and light footprint of rubber tracks.

MODEL	NET POWER (HP/KW)	RATED OPERATING CAPACITIES: 50% TIPPING LOAD (LB/KG)	OPERATING WEIGHT (LB/KG)
257D	73 / 55	2,800 / 1,270	8,048 / 3,651
277D	73 / 55	3,290 / 1,492	9,293 / 4,215
287D	73 / 55	4,000 / 1,814	9,929 / 4,504
297D2	95 / 71	4,700 / 2,132	10,692 / 4,850
297D2 XHP	106 / 79	4,800 / 2,177	10,918 / 4,952



COMPACT TRACK LOADERS

Suspended steel undercarriage for smooth ride and productivity in a variety of conditions.

MODEL	NET POWER (HP/KW)	RATED OPERATING CAPACITIES: 50% TIPPING LOAD (LB/KG)	OPERATING WEIGHT (LB/KG)
239D	66 / 49	2,050 / 930	7,289 / 3,306
249D	66 / 49	2,300 / 1,043	7,685 / 3,486
259D	73 / 55	2,900 / 1,315	8,945 / 4,057
279D	73 / 55	2,935 / 1,331	9,893 / 4,487
289D	73 / 55	3,800 / 1,724	10,533 / 4,778
299D2	95 / 71	4,600 / 2,087	11,275 / 5,114
299D2 XHP	106 / 79	4,725 / 2,143	11,608 / 5,265



MINI HYDRAULIC EXCAVATORS

Work in tight spaces with the power to dig into any project.

MODEL	NET POWER (HP/KW)	OPERATING WEIGHT (LB/KG)
300.9D	18 / 13.2	2,170 / 985
301.4C	18 / 13.2	3,435 / 1,558
301.7D	18 / 13.2	4,245 / 1,925
301.7D CR	18 / 13.2	3,726 / 1,690
302.4D	18 / 13.2	5,315 / 2,410
302.7D CR	20.7 / 15.2	5,890 / 2,670
303E CR	23.5 / 17.5	7,297 / 3,310
303.5E2 CR	23.5 / 17.5	7,803 / 3,539
304E2 CR	40.2 / 30	8,564 / 3,884
305E2 CR	40.2 / 30	11,433 / 5,185*
305.5E2 CR	44.2 / 32.9	11,958 / 5,423*
308E2 CR SB	65 / 48.5	18,519 / 8,400*

*WITH CAB



COMPACT WHEEL LOADERS

Big loader features in a compact size. Compatible with many Skid Steer Loader attachments for added versatility.

MODEL	NET POWER (HP/KW)	HINGE PIN @ MAX HEIGHT (FT/MM)	OPERATING WEIGHT (LB/KG)	RATED BUCKET CAPACITY (YD³/M³)
903C	40 / 30	10.6 / 3,225	9,150 / 4,150	0.8 / 0.6
906M	68 / 51	10.7 / 3,230*	12,346 / 5,600*	1.18 / 0.9*
907M	68 / 51	10.7 / 3,230*	12,677 / 5,750*	1.3 / 1*
908M	68 / 51	11.2 / 3,410*	14,032 / 6,365*	1.4 / 1.1*
910K	93 / 70	12.0 / 3,675	15,714 / 7,130	1.6 / 1.2
910K HL	93 / 70	13.2 / 4,030	16,837 / 7,639	1.6 / 1.2
914K	93 / 70	12.1 / 3,715	17,910 / 8,126	1.8 / 1.4
914K HL	93 / 70	13.3 / 4,070	18,030 / 8,181	1.8 / 1.4

*WITH SSL COUPLER



BACKHOE LOADERS

Best-in-class performance from the most versatile machines on the job.

MODEL	NET POWER-SAE J1349 (HP/KW)	OPERATING WEIGHT (MINIMUM LB/KG)	DIG DEPTH-STANDARD (FT-IN / MM)
415F2	68 / 51	15,207 / 6,898	14'3" / 4,360
416F2	87 / 65	15,904 / 7,214	14'3" / 4,360
420F2 / 420F2 IT	93 / 69	17,033 / 7,726	14'3" / 4,360
430F2 / 430F2 IT	108 / 80	17,141 / 7,775	15'4" / 4,686



TELEHANDLERS

The power to lift and extend heavy loads and place them in elevated areas.

MODEL	MAX LIFT HEIGHT	RATED LOAD CAPACITY (LB/KG)	OPERATING WT (LB/KG)
TH255C	18'4" / 5.6 m	5,500 / 2,500	11,000 / 4,999*
TH406C	20'0" / 6.1 m	8,150 / 3,700	18,364 / 8,330*
TH407C	24'0" / 7.3 m	8,150 / 3,700	19,246 / 8,730*
TH514C	45'0" / 13.7 m	11,001 / 4,990	24,890 / 11,290*

*WITH CARRIAGE AND FORKS



DOZERS

The industry standard for land clearing and dozing work.

MODEL	POWER - NET (HP/KW)	OPERATING WEIGHT-XL (LB/KG)
D3K2 TIER 4 FINAL	80 / 59.7	17,465 / 7,922
D4K2 TIER 4 FINAL/STAGE IV	92 / 68.8	18,007 / 8,168
D5K2 TIER 4 FINAL/STAGE IV	104 / 77.6	20,313 / 9,214



EXCAVATORS

Unmatched productivity for trenching, digging foundations or site prep.

MODEL	NET POWER (HP/KW)	OPERATING WEIGHT (LB/KG)
311F	70 / 52	30,600 / 13,900
313F GC	70 / 52	32,200 / 14,600
314E LCR	89 / 67	32,600 / 14,800
316E L	113 / 85	38,801 / 17,600
320E L / 320E L RR	153 / 114	54,895 / 24,900
323 F L	161 / 120	56,000 / 25,400
326 F L	203 / 149	57,583 / 26,119
330 F L	239 / 175	66,364 / 30,102

To see additional excavator sizes, visit cat.com



SMALL WHEEL LOADERS

Superior reach, excellent visibility and low effort controls to lift, load, move and dump.

MODEL	RATED NET POWER (HP/KW)	BUCKET PIN HEIGHT @ MAX LIFT (FT-IN)	OPERATING WEIGHT (LB/KG)	BUCKET CAPACITIES (YD³)
926M	148 / 110	12'8"	28,742 / 13,037	2.5 - 6.5
926M HL	148 / 110	14'5"	29,357 / 13,316	2.5 - 6.5
930M	157 / 117	12'9"	30,852 / 13,994	2.7 - 6.5
930M HL	157 / 117	14'9"	31,363 / 14,226	2.7 - 6.5
938M	182 / 136	13'0"	36,156 / 16,400	3.2 - 6.5
938M HL	182 / 136	14'1"	35,993 / 16,326	3.2 - 6.5

» REQUEST MORE INFORMATION AT 1-888-CAT-1460

WHEN UPTIME MATTERS, COUNT ON CAT FOR THE BEST IN DEALER SUPPORT



To maintain a profitable agricultural operation, you need equipment you can rely on at all times. The same applies to service. Whether you work on your own machines or want it done for you, your Cat® dealer keeps you up and running.

- Rapid parts availability
- Online parts ordering
- Preventive maintenance services
- Maintenance agreements
- Field service trucks

Visit www.cat.com/dealer-locator to find your local Cat dealer.

TOUGH TOOLS FOR TOUGH MACHINES

CLEARING

Ripping • Grubbing
Breaking • Cutting
Grabbing • Loading

EARTHMOVING

Trenching • Excavating
Drilling • Backfilling
Grading • Raking

FINISHING

Unloading • Placing
Spreading • Compacting
Rolling • Sweeping

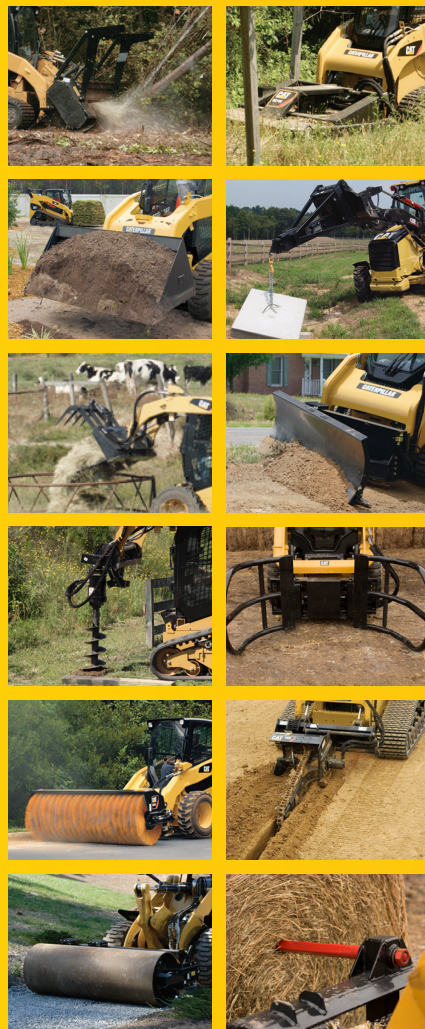
Cat Attachments

Engineered to maximize the performance of Cat machines, Cat attachments enhance your productivity. By getting the most out of your machine, our versatile attachments help you do the job quicker and more efficiently. Integrating seamlessly with Cat machines, our attachments provide the total system solution for every job you take on.

CAT ATTACHMENTS

- | | | |
|--------------------|--------------------|--------------------------|
| ■ Augers | ■ Buckets | ■ Landscape Tillers |
| ■ Backhoes | General Purpose | ■ Material Handling Arms |
| ■ Blades | Multi Purpose | ■ Mulchers |
| Angle | Light Material | ■ Rakes |
| Dozer | Utility | Industrial Grapple |
| ■ Bale Grab | Dirt | Landscape |
| ■ Bale Spear | Ditch Cleaning | Power Box |
| ■ Brooms | High Capacity | ■ Shears |
| ■ Brushcutters | Heavy Duty | ■ Silage Defacer |
| ■ Couplers | Side Dump | ■ Snowblowers |
| ■ Cold Planers | Industrial Grapple | ■ Snow Plow |
| ■ Forks | Utility Grapple | ■ Sectional Snow Push |
| Pallet | Coral | ■ Stump Grinders |
| Utility | Heavy Duty Rock | ■ Thumbs |
| Industrial Grapple | Soil Excavation | ■ Trenchers |
| Utility Grapple | | ■ Vibratory Compactors |
| ■ Hammers | | ■ Wheel Saws |

Visit www.cat.com/en_US/products/new/attachments to see specifications, photos and videos. And consult your local Cat dealer for complete attachment availability.





USED EQUIPMENT

Cat Used and Certified Used Equipment

From a large supply ranging in age and hour – to Cat Certified Used Equipment, financing and extended service coverage options – Cat dealers offer affordable alternatives to new machines and engines. Used inventory includes trucks, track-type tractors, excavators, graders, loaders, forklifts, engines, generator sets, attachments and more.

Visit www.catused.com



RENTAL



From Heavy Duty to Light Duty, Get It All Here!

Count on The Cat Rental Store for all your equipment rental needs. From attachments to construction equipment, Cat Rental Stores offer products from Cat and other leading brands to meet most jobsite needs.

Visit www.catrentalstore.com to browse the lineup of available equipment at your local Cat Rental Store and to request a quote.

Commercial Account



AUTHORIZED CARDHOLDER
PROJECT NAME / COMPANY
1234 5678 9012 3456



FINANCING

Cat Financial Commercial Account is a fast and convenient way to pay for parts and service purchases and machine rentals across the U.S. With your Commercial Account, you can purchase or rent anything offered at any Cat dealer or Cat Rental Store (with the exception of purchases of new Cat construction equipment).

www.finance.cat.com

www.cat.com/ag

BUILT FOR IT.™

