

WHAT'S YOUR STANDARD?



10 REASONS TO CHOOSE CAT®
OVER THE COMPETITION

BUILT FOR IT.™

Wheeler



10 REASONS TO CHOOSE CAT® D SERIES SKID STEER, MULTI TERRAIN, AND COMPACT TRACK LOADERS OVER THE COMPETITION

If you are considering purchasing compact construction equipment, you want to be knowledgeable about your options.



1 JOYSTICK CONTROLS

The Cat Ergonomic Low-Effort Joystick Controls come **STANDARD** and even a novice operator can work efficiently. Competitors will charge you approximately \$2,000 for this option.



Cat
STANDARD



Competitor + **Approximately**
\$2,000

2 FOOT THROTTLE

The Cat foot throttle allows you to always keep your hands on the joysticks where they belong while saving fuel. An average of \$2,000 for upgraded controls will get you this feature on a competitor's machine.



Cat
STANDARD



Competitor + **Approximately \$2,000**

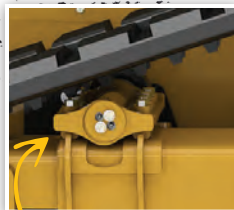
3 SUSPENDED UNDERCARRIAGE

(Standard on all Cat CTL and MTL)

The Cat **STANDARD** undercarriage suspension isolates the operator and machine chassis from shock and vibration generated by rough terrain while conforming to ground conditions for maximum traction and flotation. This means you get a smooth ride, superior load retention, and long-term durability. The competition's optional leaf spring roller system undercarriage is still hard mounted to the chassis with minimal travel in the mid roller wheels only, not the entire undercarriage, resulting in reduced Rated Operating Capacity (ROC).



Cat
STANDARD



Torsion Axle



Competitor + **Approximately \$1,500**

4 TWO SPEED

STANDARD 2-speed on 259D through 299D XHP CTL models allow you to complete your job sooner. The competition offers this option on limited models and will charge you approximately \$2,000.



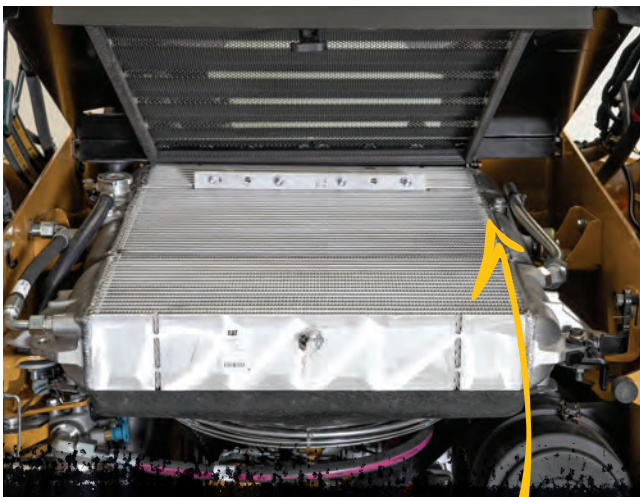
Cat
STANDARD



Competitor

5 COOLING SYSTEM

All Cat SSL/MTL/CTL offer a side by side cooling package as **STANDARD** for optimal cooling to both the radiator and hydraulic oil cooler. This configuration minimizes debris buildup versus competitor's stacked coolers. A Demand Fan is available for further improvement in fuel efficiency, heater performance in cold temperatures and reduced noise. The stacked design does not allow for proper air flow to the bottom coolers, increasing the risk of overheating, especially when running work tool attachments.



Cat
STANDARD

Side-by-Side Coolers



Competitor

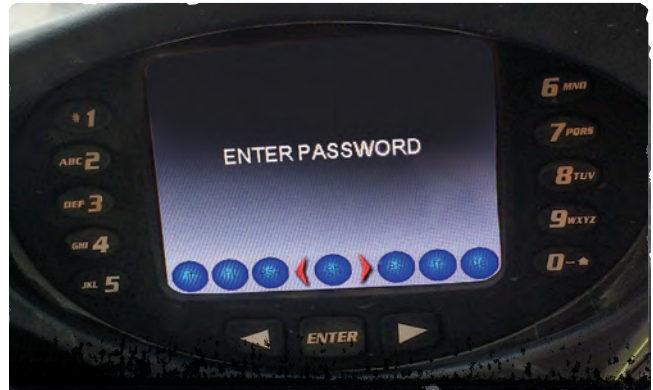
Stacked Coolers

6 SECURITY

The **STANDARD** control monitor provides a single-code security to help prevent unwanted operation. With the Advanced Display Panel, the security system is capable of programming up to 50 operator codes to store and recall each operator's preferences and working parameters. The competition has no security system standard.



Cat
STANDARD



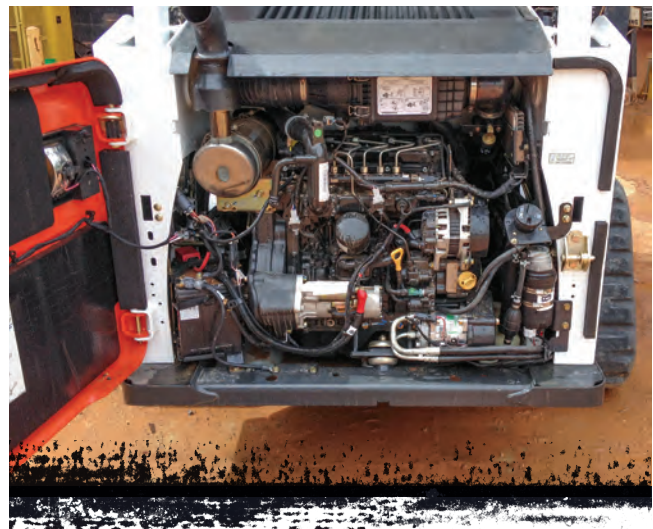
Competitor

7 SERVICEABILITY

Time is money. Cat grouped service points, easy service access and individually replaceable and serviceable components reduce machine downtime for increased productivity and lower owning and operating costs. The competition mounts their engine transversely, leaving access to only one side of the engine. This setup requires a belt drive to run the pumps, which is less efficient, and adds a maintenance item to the system.



Cat
STANDARD



Competitor



8 OPERATOR ENVIRONMENT

STANDARD modular one-piece sealed and pressurized cab for a clean, quiet working environment. Available High Back, Heated Air Suspension Seat with Lumbar Adjustment. The competition uses a two piece cab design that relies on foam seals to join the two sections. Optional Air Suspension Seat that does not include High Back, Heat or Lumbar Support.



Cat
STANDARD



Competitor

9 SUPERIOR SAFETY

Don't let the competition charge you for safety! Lower your risk of jobsite accidents, insurance rates and repair costs with our industry leading **STANDARD** safety features that include: excellent sight lines, horn, rear view mirror, work lights, backup alarm, two emergency exits, safety interlock system, hydraulic accumulator, dead engine lower valve, lift arm brace that can be operated by single person and our spring applied, hydraulically released parking brake. Optional rearview camera for enhanced job site visibility.



Cat
STANDARD



Competitor

10 DEALER CAPABILITIES

Wheeler Machinery will be there for the life of your equipment, bringing you the tools, technologies, service and know-how that keep your machine productive and make it pay. So when you're looking for a complete and capable parts and service provider, or you're making the decision to buy, rent, repair, rebuild or sell a machine for your business, you owe it to yourself to know the people at Wheeler.

Cat
STANDARD

- ✓ 24/7 Online PartStore
- ✓ Convenient Locations Near You
- ✓ Unmatched Service
- ✓ Highly Trained Technicians
- ✓ Rebuild Programs
- ✓ Customer Support Agreements
- ✓ Technical Support

Competitor

- ✓ Initial Price

WHEELER LOCATIONS

Wheeler Machinery offers 10 convenient locations to meet all of your sales, rental, parts, and service needs. Please contact your nearest location for more information or visit us online.

CEDAR CITY

451 North Lund Highway
Cedar City, UT 84720
(435) 586-6323

HURRICANE

5300 West Wheeler Way
Hurricane, UT 84737
(435) 634-9904

LINDON

239 North 1800 West
Lindon, UT 84042
(801) 796-8333

LOGAN

95 North 1000 West
Logan, UT 84321
(435) 753-5505

MOAB

1831 South Highway 191
Moab, UT 84532
(435) 259-1077

OGDEN

2366 South 1900 West
Ogden, UT 84401
(801) 732-9100

SALINA

1345 South State Street
Salina, UT 84654
(435) 529-7423

SALT LAKE

4901 West 2100 South
Salt Lake City, UT 84120
(801) 974-0511

VERNAL

1345 South 1500 East
Vernal, UT 84078
(435) 789-0635

ELY

1500 Avenue D
ELY, NV 89301
(775) 289-2466

www.wheelercat.com

Wheeler

