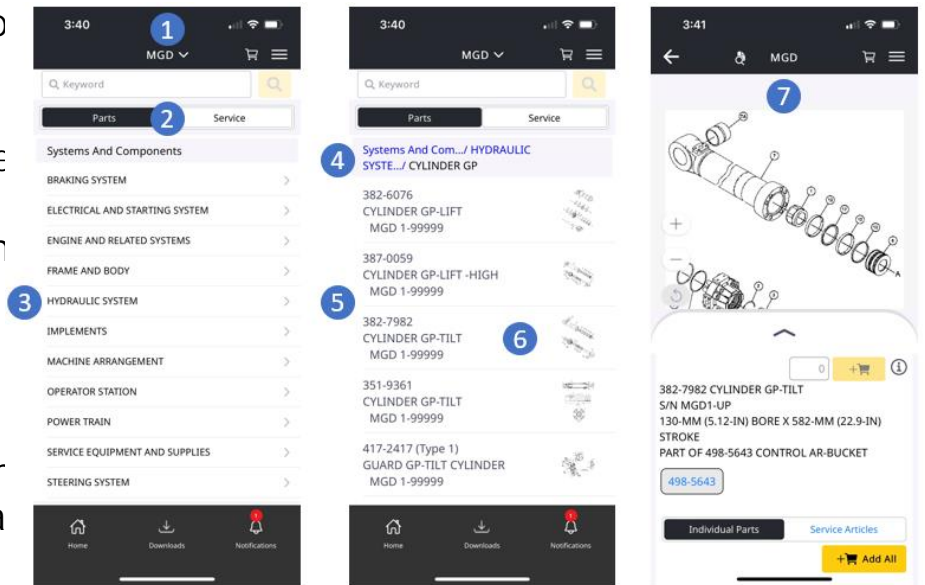


HOW TO SEARCH USING SYSTEM CATEGORIES

1. The prefix or serial number you selected to view
2. information for your selected prefix/serial number
3. Parts information system categories
4. The top row shows the up the hierarchy
5. Parts in selected group
6. Click on the part tile that you want to view
7. Parts information screen

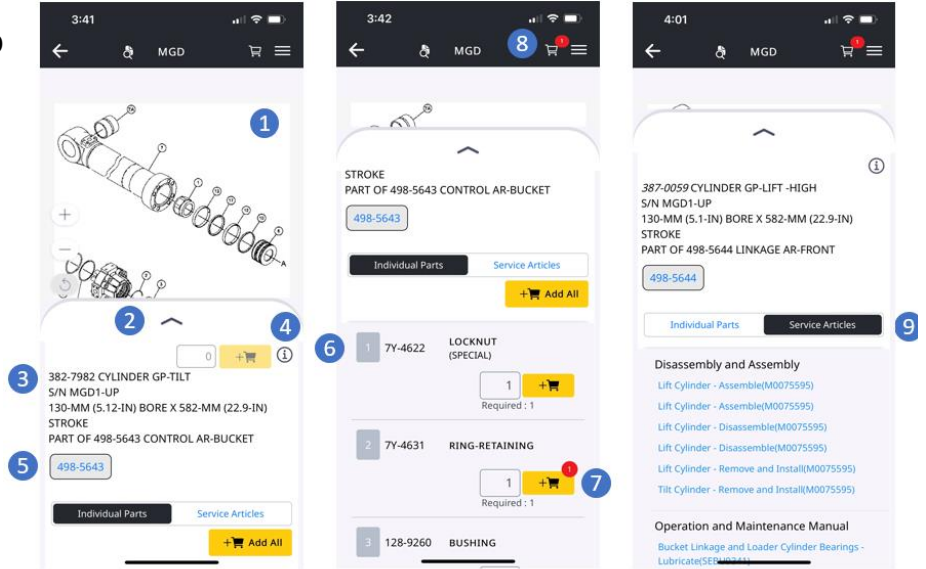


HOW TO SEARCH USING KEYWORDS OR PART NUMBERS

1. Search box keywords / part numbers
2. Search results screen
3. Filter button
4. Filter options
5. Press Apply for any selected filters
6. Filtered search results
7. Count of active filters
8. Clear All button to remove all filters

HOW TO ACCESS PARTS INFORMATION

1. Component image
2. Resizable parts drawer – swipe up or down to resize or hide
3. Component information
4. Additional component information
5. Next higher level of the component
6. Component breakdown – part numbers, names, quantities
7. Add-to-cart button – red circle indicates quantity of the parts already in the shopping cart
8. Quantity of parts in the shopping cart
9. Service articles related to the parts information



HOW TO ACCESS SERVICE INFORMATION

1. The prefix or serial number you selected to view
2. Select 'Service' to view service information for your selected prefix/serial number
3. The top row shows the 'breadcrumb trail' to navigate up the hierarchy
4. List of service articles in selected grouping
5. Individual service article
6. Back button to return to prior screen

